

PROMPT
GUIDES



3 days



3-day London City Guide

A preplanned step-by-step time line
and city guide for London.
Follow it and get the best of the city.



Other Destinations

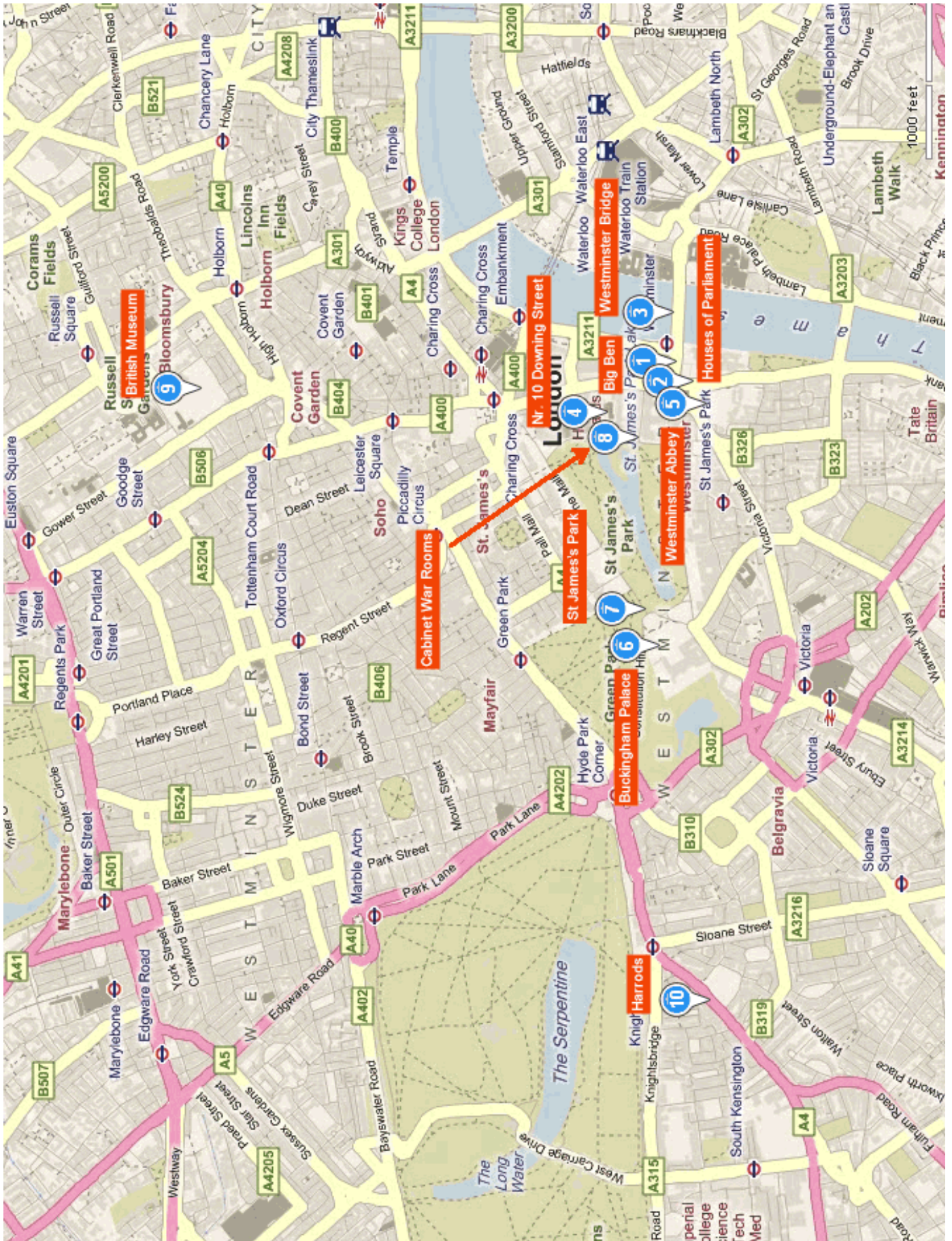
London, Barcelona, Paris, Boston, Athens, Amsterdam, Rome, Budapest ...and more

[See all PromptGuides destinations >](#)

Overview of Day 1

	LEAVE HOTEL	Tested and recommended hotels in London >	
	Take subway or bus to Westminster station		
09:00-09:10	Big Ben	One of London's best-known landmarks	Page 5
09:10-09:20	Houses of Parliament	One of London's most impressive building	Page 5
09:20-09:30	Westminster Bridge	Excellent spot for taking photos of Big Ben and Houses of Parliament	Page 5
	Take a walk to Nr. 10 Downing street - 5'		
09:35-09:45	Nr.10 Downing Street	Official home and office of Britain's Prime Minister	Page 6
	Take a walk to Westminster Abbey - 5'		
09:50-11:20	Westminster Abbey	One of the finest examples of medieval architecture in Europe	Page 6
	Take Bus line 148 from Parliament Square/Westminster Abbey stop to Hyde Park Corner stop (Direction: White City Bus Station)		
	Take a walk to Buckingham Palace - 10' in all		
11:30-12:00	Buckingham Palace	One of London's best recognized landmarks	Page 7
	Take a walk to St. James's Park - 5'		
12:05-12:35	St. James's Park	Lovely park with a duck and pelican pond	Page 7
	Lunch time		
	Take a walk to Cabinet War Room		
13:45-15:15	Cabinet War Rooms	Unique historical place	Page 7
	Take a walk to Charing Cross station		
	Take Northern Line to Tottenham Court Road station (Direction: Edgware or High Barnet)		
	Take a walk to British Museum - 25' in all		
15:40-17:30	The British Museum	Oldest museum in the world	Page 8
	Take a walk to Holborn station		
	Take Piccadilly Line to Knightsbridge station (Direction: Heathrow)		
	Take a walk to Harrods - 45' in all		
18:15-19:15	Harrods	One of the world's most famous department stores	Page 8
	END OF DAY 1		

Overview of Day 1



Attraction Details

09:00-09:10



Big Ben (Palace of Westminster House of Commons, London SW1A 0AA)

THINGS YOU NEED TO KNOW

- Big Ben, built in 1858, is the iconic clock tower of Palace of Westminster (Houses of Parliament)
- The tower's name refers to the clock's 14-tonne bell
- The bell is called Big Ben after Sir Benjamin Hall, the chief commissioner of the works
- Some argue that the tower is named after Benjamin Caunt, a famous boxer of the period

- The tower resisted German bombing and continued to keep time during the war

THINGS TO DO THERE

- Have your photo taken with Big Ben in the background
- Listen to Big Ben strike the hour

TIPS & INSIGHTS

- Only UK citizens can go up to the tower

[MORE Info and Photos >](#)

09:10-09:20



Houses of Parliament (Palace of Westminster House of Commons, London SW1A 0AA)

THINGS YOU NEED TO KNOW

- Houses of Parliament (also known as Palace of Westminster) are the political heart of the city and the UK
- The original palace, built approx. thousand years ago, was destroyed by fire in 1834
- The current one having 1,100 rooms and 11 courtyards was built in 1840
- It is home to the House of Commons and the House of Lords
- 659 publicly elected Members of Parliament sit and pass legislatures in the House of Commons
- House of Lords with approx. 700 members is an unelected body that has limited power
- Part of a UNESCO World Heritage Site since 1987

- Its famous clock tower is called Big Ben

THINGS TO DO THERE

- Admire the majestic building from the outside
- For the best photo spot walk through the Westminster Bridge to the other side of the Thames

TIPS & INSIGHTS

- UK citizens can take guided tours on select days throughout the year
- Non-UK citizens can take guided tours only during Parliament's summer break
- You may observe debates for free from the Stranger's Galleries in both houses

[MORE Info and Photos >](#)

09:20-09:30



Westminster Bridge (Between Westminster, Middlesex bank, and Lambeth, Surrey bank)

THINGS YOU NEED TO KNOW

- Westminster Bridge arches over the River Thames next to the Houses of Parliament
- It links the Palace of Westminster (west bank) with County Hall and the London Eye (east bank)
- The bridge was designed by the Swiss architect Charles Labelye and built between 1739 and 1750
- It is made entirely of stone
- London Marathon used to finish here in the early years of the race

THINGS TO DO THERE

- Walk along the bridge and take pictures of the famous London landmarks: Parliament, Big Ben, London Eye and the River Thames

TIPS & INSIGHTS

- You can buy great pancakes at the west bank foot of the bridge
- Return to the bridge after dawn to enjoy the beautiful view of the illuminated city

[MORE Info and Photos >](#)

Attraction Details

09:35-09:45



Nr.10 Downing Street (10 Downing Street, London, SW1A 2AA)

THINGS YOU NEED TO KNOW

- No. 10 Downing Street is the official home and office of Britain's Prime Minister
- It is one of four surviving houses built in 1680 for Sir George Downing
- Sir Downing was an important figure of the English Civil War
- The building contains a State Dining Room and the Cabinet Room, where government ministers meet to formulate policy
- No. 11 is the residence of the Chancellor of the Exchequer (Finance Minister)
- The famous black door can only be opened from the inside

- The street was closed down for security reasons in 1989

THINGS TO DO THERE

- Have a look at the building looking through the gates from Whitehall
- Have your photo taken with the house in the background

TIPS & INSIGHTS

[MORE Info and Photos >](#)

09:50-11:20



Westminster Abbey (20 Dean's Yard, City of London SW1P 3PA, UK)

Opening hours: Monday, Tuesday, Thursday, Friday: 9:30am - 4:30pm, Wednesday: 9:30am - 7pm, Saturday: 9:30am - 2:30pm • **Admission:** 16 £

THINGS YOU NEED TO KNOW

- One of the finest examples of medieval architecture in Europe
- The church was founded in 1065 as a Benedictine abbey by Edward the Confessor
- It is a place for royal ceremonials. Numerous coronations were held here including Queen Elizabeth's (1953)
- Also a burial place for royals, important statesmen and literary figures. Princess Diana's funeral (1997) took place in the church too
- Houses more than 3,000 memorials to kings and significant figures of British history (William the Conqueror, Edward III, Mary Queen of Scots or Elizabeth I)

- Admire the interior of the church
- Pay particular attention to the Gothic ceilings and the stained glass of the Chapter House
- Do not miss the Coronation Chair and the Poet's Corner (memorial place dedicated to literary figures such as Dickens)

TIPS & INSIGHTS

- On Sundays the abbey is open only for worship (free entrance)
- Great audioguide narrated by Jeremy Irons
- Please note that it is not allowed to take photos inside
- Verger-led tours are available for additional £3.00

[MORE Info and Photos >](#)

THINGS TO DO THERE

- Pick up your free audio guide (included in entrance fee)

11:30-12:00

Buckingham Palace (13 Buckingham Palace Rd, Westminster, London SW1W 0, UK)**Opening hours:** July 23 - Oct 3: 9:30am - 6:30pm • **Admission:** 17.5 £**THINGS YOU NEED TO KNOW**

- Buckingham Palace was built as a town house for the first duke of Buckingham in 1705 and extended into a palace by George IV between 1824 and 1831
- It is home to the present Queen. It has been the official London residence of Britain's monarchs since 1837
- It houses 775 rooms and has a staff of around 300
- If the royal flag is flying, it means that the queen is at home
- It is used to receive and entertain guests on state, ceremonial and official occasions

THINGS TO DO THERE

- Admire the palace through the gates
- Do not miss the golden statue of queen Victoria on the square in front of the palace

- If you arrive at the right time you can enjoy the traditional Guard Change

TIPS & INSIGHTS

- The Guard Change takes place in front of the castle at 11.30am daily from April until the end of July and on alternate days for the rest of the year, weather permitting
- The 19 State Rooms, the Royal Mews and The Queen's Gallery are open to the public each year for most of August and September while the queen is in Scotland
- You can [book your ticket online](#)

[MORE Info and Photos >](#)

12:05-12:35

St. James's Park (St James's Park, London, SW1A 2BJ)**Opening hours:** All year round: 5am - midnight**THINGS YOU NEED TO KNOW**

- St James's Park is at the very heart of London. Often used for ceremonial and state occasions, the Park is a fantastic setting for pomp and splendour
- It was laid out in the 18th century
- Some claim St James's Park is London's prettiest and most elegant park
- The park used to be a notorious place frequented by a large number of prostitutes and brave duelists

THINGS TO DO THERE

- Take a walk through this lovely garden

- The big pond in the middle is full of water fowl of varied species, even a pelican
- Have a rest on one of the plenty beach chairs in the middle of the park

TIPS & INSIGHTS

- Take some bread with you for the birds, and nuts for the squirrels

[MORE Info and Photos >](#)

13:45-15:15

Cabinet War Rooms (King Charles Street, London, SW1A 2AQ)**Opening hours:** Daily: 9:30am - 6pm, Dec 24-26: Closed • **Admission:** 15.95 £**THINGS YOU NEED TO KNOW**

- Churchill directed World War II from this basement office
- When the war ended the rooms were closed down and turned into a museum
- All items on display are the original ones
- The museum became fully open to the public in 1984
- The unit of the telephone scrambler system that allowed Churchill to securely speak with Roosevelt was concealed as the prime minister's lavatory

THINGS TO DO THERE

- Pick up a free audio guide
- Discover the fascinating and informative museum

TIPS & INSIGHTS[MORE Info and Photos >](#)

Attraction Details

15:40-17:30

The British Museum (Great Russell Street, London, WC1B 3DG)

Opening hours: Daily: 10am - 5:30pm, Fridays: 9am - 8:30pm, Jan 1, Dec 24-26: Closed • **Admission:** Free

**THINGS YOU NEED TO KNOW**

- British Museum is the oldest museum in the world that was opened in 1753
- The museum was started with Sir Hans Sloane's donations
- Its collection includes more than 6 million items spanning 1.8 million years
- The displays include the Rosetta Stone, the colossal bust of Ramesses II and Parthenon Sculptures
- Its present Classical building was completed in 1850
- The Great Court, the central courtyard, was covered with a glass dome and opened in 2000

THINGS TO DO THERE

- Follow this [1 hour highlights tour](#) recommended by the British Museum (do not forget to download it and print it out)

TIPS & INSIGHTS

- [Free eyeOpener gallery tours](#): 30-40 minutes tours introducing different areas of the Museum's collection, led by volunteer guides
- Multimedia guide is available for £5 (separate one for kids)
- Nice cafés are located in the Great Court

[MORE Info and Photos >](#)

18:15-19:15

Harrods (87-135 Brompton Road, Knightsbridge, London, SW1X 7XL)

Opening hours: Monday - Saturday: 10am - 8pm, Sunday: 11:30am - 6pm

THINGS YOU NEED TO KNOW

- London's most famous and exclusive department store
- It was established in 1849 as a tiny grocery store employing two assistants
- Today, it offers everything from food to fashion, furniture to sportswear plus 20 in-store restaurants serving every kind of cuisine imaginable from pizza to sushi
- An Egyptian theme decorates the central well, at the bottom of which is a shrine to Diana, Princess of Wales and Dodi Al Fayed

THINGS TO DO THERE

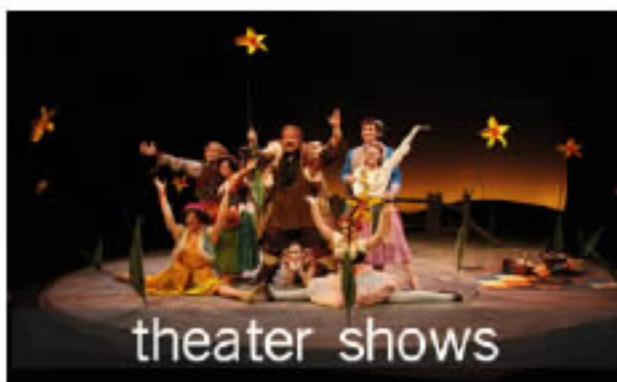
- Discover the exclusive store
- You might even do some shopping
- Must-see sights include the Food Halls, the Egyptian Hall and the Pet Department

TIPS & INSIGHTS

- After dawn you can enjoy the striking view of the building illuminated with 11,500 light bulbs

[MORE Info and Photos >](#)





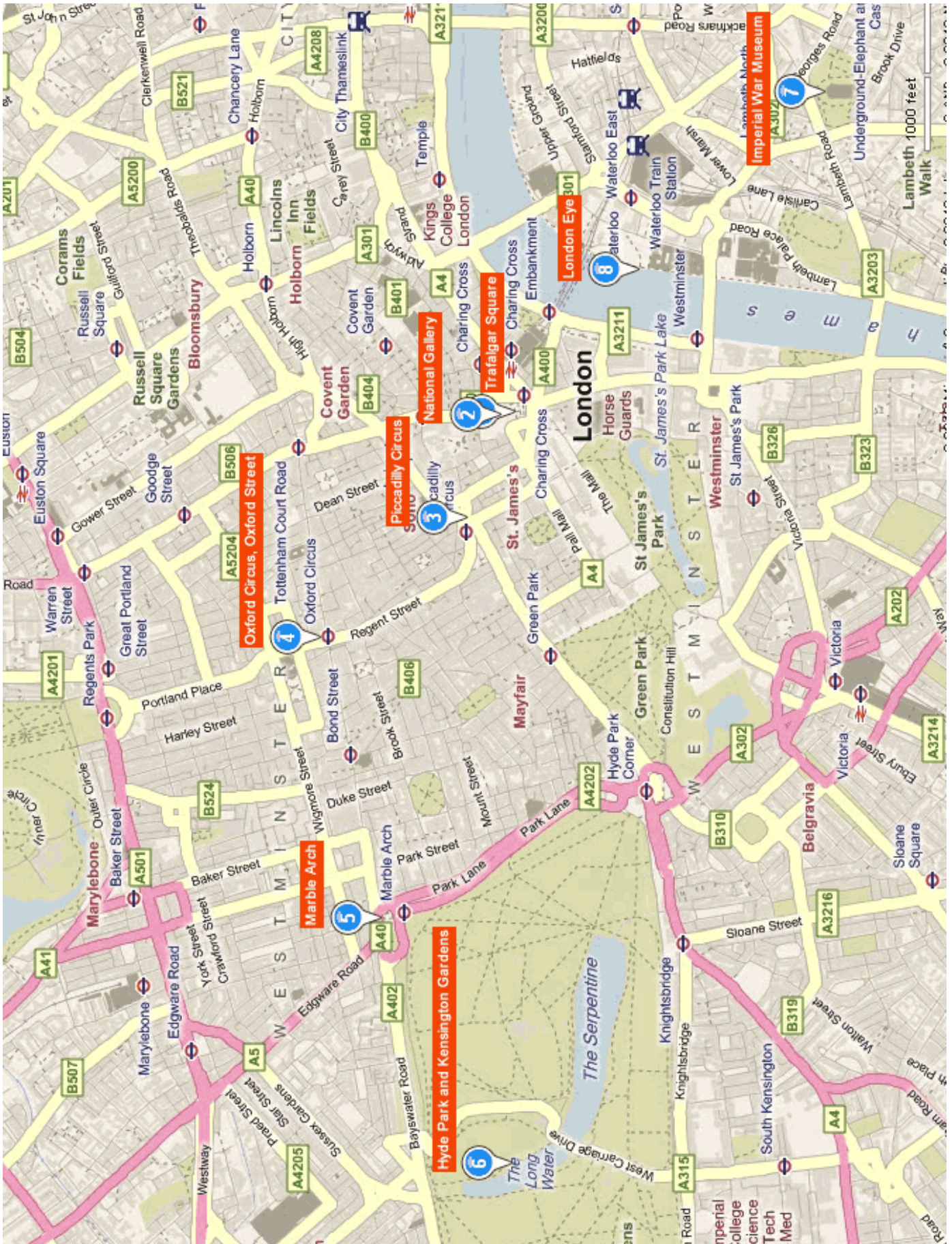
Spice up your holiday

Turn your regular holiday into something extraordinary

See all fun activities in London. [Click here >](#)

Overview of Day 2

	<p>LEAVE HOTEL Tested and recommended hotels in London ></p> <p>Take Northern or Metropolitan Line to Charing Cross station</p>	
09:00-09:15	<p>Trafalgar Square</p> <p>You find National Gallery on Trafalgar Square</p>	<p>One of the most famous squares in the world</p> <p>Page 12</p>
09:15-10:55	<p>National Gallery</p> <p>Take a walk to Piccadilly Circus - 15'</p>	<p>Fascinating museum to all</p> <p>Page 12</p>
11:10-11:30	<p>Piccadilly Circus</p> <p>Take a walk to Oxford Circus - 5'</p>	<p>One of London's best known landmarks</p> <p>Page 12</p>
11:35-13:25	<p>Oxford Street and Oxford Circus</p> <p>Lunch time on Oxford Street Take a walk to Marble Arch</p>	<p>One of the busiest shopping streets in Europe</p> <p>Page 13</p>
13:50-14:00	<p>Marble Arch</p> <p>Hyde Park is next to Marble Arch</p>	<p>Interesting piece of architecture</p> <p>Page 13</p>
14:00-16:00	<p>Hyde Park and Kensington Gardens</p> <p>Take Piccadilly Line from Knightsbridge station to Piccadilly Circus station (Direction: Cockfosters) Change to Bakerloo Line to Lambeth North station (Direction: Elephant&Castle) Take a walk to Imperial War Museum - 30'</p>	<p>Lush green oasis in the center of the city with relaxing atmosphere</p> <p>Page 14</p>
16:30-18:00	<p>Imperial War Museum</p> <p>Take Bus line 159 from Kennington Road/Imperial War Museum stop to Westminster Bdg/County Hall stop (Direction: Paddington Basin) Take a walk to London Eye - 30'</p>	<p>One of London's most interesting and engaging museums</p> <p>Page 14</p>
18:30-19:30	<p>London Eye</p>	<p>Quickly became a London icon</p> <p>Page 15</p>
	<p>END OF DAY 2</p>	



Attraction Details

09:00-09:15



Trafalgar Square (Trafalgar Square, City of London, London, WC2N 5DN)

THINGS YOU NEED TO KNOW

- Trafalgar Square, in central London, is one of the best known squares in the world
- In the middle stands the Nelson's Column
- The square pays tribute to the Battle of Trafalgar (1805)
- In the battle Admiral Nelson defeated Napoleon's fleet
- The square is an important hub of the West End

THINGS TO DO THERE

- Take a walk around the square

- Take some photos of the statues and fountains

TIPS & INSIGHTS

- The public toilets on the square are very clean
- The square looks splendid when illuminated at night

[MORE Info and Photos >](#)

09:15-10:55



National Gallery (Trafalgar Square, London, WC2N 5DN)

Opening hours: Daily: 10am - 6pm, Fridays: 10am - 7pm, Jan 1 and Dec 24-26: Closed • **Admission:** Free

THINGS YOU NEED TO KNOW

- National Gallery exhibits around 2300 paintings
- It was founded in 1832 with only 38 paintings
- It is located on Trafalgar Square
- The gallery covers periods from the early Renaissance to the impressionists (1250-1900)
- It owns artworks from painters such as Monet, Van Gogh, Rembrandt, Michelangelo, Rubens, Picasso
- The museum houses one of the greatest collections of European paintings in the world

THINGS TO DO THERE

- Collect a map from the audio guide desk

- Walk around and enjoy the wonderful art work of the well known artists
- At the end of your visit buy a print of your favorite masterpiece in the museum shop

TIPS & INSIGHTS

- 60-minute taster tours of the collection every day at 11.30am and 2.30pm, and Fridays at 7pm for free (Sainsbury Wing Information Desk)
- Audioguide is available for a fee of £3.50
- The lower floor coffee shop has great interactive computers that will help you plan your day, help you find specific paintings or artists. You can also print out your plan

[MORE Info and Photos >](#)

11:10-11:30



Piccadilly Circus (Piccadilly Circus, London, W1J 9HS)

THINGS YOU NEED TO KNOW

- Piccadilly Circus is a square in Central London that is best known for its neon advertising displays
- It is a popular meeting place among Londoners
- The Eros statue in the middle is a memorial to the Earl of Shaftesbury
- The square is the entrance to London's entertaining district

THINGS TO DO THERE

- Look around the square for great photo themes

- You can not miss the famous neon advertisements

TIPS & INSIGHTS

- For discount shopping visit the 5-story sporting goods store, Lillywhite's

[MORE Info and Photos >](#)

11:35-13:25



Oxford Street and Oxford Circus (Oxford Circus, Westminster, London, W1)

THINGS YOU NEED TO KNOW

- Oxford Street is London's major and most famous shopping street
- It is home to major department and flagship stores and smaller shops
- Some of the brands represented are Marks&Spencer, Zara, Nike and H&M
- Fine cuisine restaurants, pubs and theaters are also located on the street
- At Oxford Circus there is a notable diagonal pedestrian crossing, opened in 2009, the only one of its kind in central London

THINGS TO DO THERE

- Walk along this famous shopping street enjoying its unique atmosphere

- Refresh your wardrobe with a few new trendy items
- Have a coffee break after the tiresome shopping

TIPS & INSIGHTS

- Expect the street to be crowded
- The street is especially charming at Christmas time with its decoration and illumination
- If you have the time, take a red double decker bus and ride along for a unique London experience

[MORE Info and Photos >](#)

13:50-14:00



Marble Arch (Marble Arch, W1H)

THINGS YOU NEED TO KNOW

- Marble Arch is a white Carrara-marble monument in West London
- Only the royal family, the King's Troop, and the Royal Horse Artillery used to be allowed to pass through it
- The arch used to be a gateway to the Buckingham Palace before having been moved to its current location in 1851

THINGS TO DO THERE

- Have your photo taken in front of this famous London landmark

TIPS & INSIGHTS

[MORE Info and Photos >](#)

Attraction Details

14:00-16:00

Hyde Park and Kensington Gardens (Westminster, London W1)**THINGS YOU NEED TO KNOW**

- Hyde Park is a large and overly popular royal park in Central London with cafés, fountains, flower gardens and more
- It is best known for Speakers' Corner, a place where people can speak freely about anything
- Its lake is called the Serpentine that is home to waterfowl and oarsmen. Alas the city's main boating spot
- Other attractions of Hyde Park include: Rotten Row, Crystal Palace, Prince Diana Memorial, Holocaust Memorial, and a botanical curiosity, the *Fagus sylvatica pendula*
- A continuation of Hyde Park, Kensington Gardens was opened to the public in 1841
- Kensington Palace is famous as the former home of Princess Diana
- Main attractions of Kensington Gardens: Round Pond, Peter Pan statue, Albert Memorial
- In both parks a wide variety of activities is available to visitors such as swimming, boating, cycling and skating. There are pitches for team games, tennis courts, tracks for horse riding and a spectacular children's playground

THINGS TO DO THERE

- Take a walk in Hyde Park along lake Serpentine
- Find a bench and relax or have a coffee in one of the park's cafés
- Cross the bridge leading to Kensington Gardens
- Head west towards Round Pond and Kensington Palace

TIPS & INSIGHTS

- Great place to see Londoners live their normal life
- Boats can be rented from the Boat House next to the Serpentine
- Many concerts are held in the park

[MORE Info and Photos >](#)

16:30-18:00

Imperial War Museum (Lambeth Rd, London, SE1 6HZ)

Opening hours: Daily: 10am - 6pm, Dec 24-26: Closed • **Admission:** Free

THINGS YOU NEED TO KNOW

- Imperial War Museum is dedicated to documenting the technology and social effect of war
- It opened in 1917 to collect materials relating to World War I
- Now exhibits include memorabilia from all modern British conflicts
- Next to all types of war machines are on display
- Interactive sections, (WW I trench warfare and WWII bomb shelters) bring the reality of war to life
- Hitler's signed order authorizing the march on Poland is on display
- A large Holocaust Exhibiton is housed in the building

THINGS TO DO THERE

- Take some photos of the impressive building from the outside
- Explore some of the permanent galleries: World War I and II, Conflicts since 1945, The Holocaust, Secret War
- Do not miss the great special exhibitions

TIPS & INSIGHTS

- Audio tour is available, but not necessary
- Children love to see the tanks, Spitfires and huge guns
- Children under 11 are not permitted in the Holocaust Exhibition

[MORE Info and Photos >](#)



18:30-19:30

London Eye (Riverside Building, County Hall, Westminster Bridge Road, London, SE1 7PB)

Opening hours: September - March: 10am - 8:30pm, April - June: 10am - 9pm, July - August: 10am - 9:30pm • **Admission:** 18.60 £

THINGS YOU NEED TO KNOW

- London Eye is the world's highest observation wheel
- It is located opposite to the Houses of Parliament on the other side of the Thames
- There are 32 capsules with total visibility in all directions
- It takes 30 min to ride London Eye
- The wheel was built to celebrate the Millennium year (2001) and planned for 5 years

THINGS TO DO THERE

- Ride the wheel and enjoy the fantastic view over London

- Take photos of yourself with London Eye in the background

TIPS & INSIGHTS

- Before making your online booking consult the weather forecast. For the best experience it is advised to go on a bright day
- [Book online](#) and combine your 'Flight' with other attractions (for example: Madam Tussauds) to save money

[MORE Info and Photos >](#)





Don't know which hotel to book?

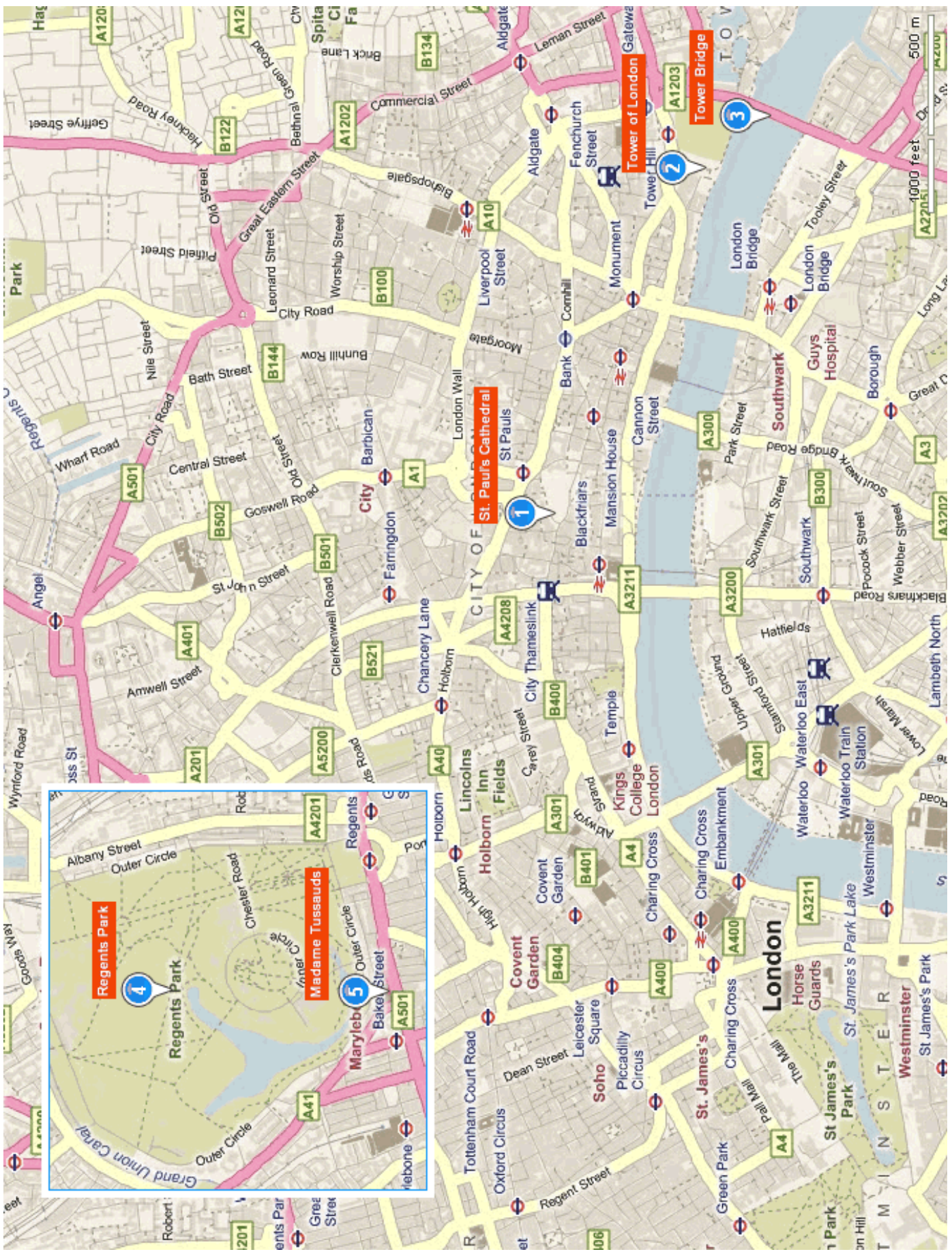
Ask one of our
Local Hotel Experts to
recommend you a hotel.

[Click here to ask for a FREE hotel recommendation >](#)

Overview of Day 3

	LEAVE HOTEL Tested and recommended hotels in London >		
	Take Central Line to St.Paul's station station		
09:00-10:00	St Paul's Cathedral —————	World-famous dome	Page 19
	Take Bus line 15 from St. Paul's Cathedral stop to Tower of London stop - 30'		
10:30-13:30	Tower of London —————	World Heritage Site	Page 19
	Tower bridge is next to the Tower of London		
13:30-13:45	Tower Bridge —————	One of the most recognized bridges in the world	Page 20
	Lunch time Take Circle or District Line from Tower Hill station to Embankment station (Direction: Ealing Broadway)		
15:30-16:45	Regent's Park —————	Lovely gardens with pretty lakes and beautiful flower gardens	Page 20
	Take a walk to Madame Tussauds - 15'		
17:00-19:00	Madame Tussaud's —————	One of London's most popular attractions	Page 20
	END OF DAY 3		

Overview of Day 3



Attraction Details

09:00-10:00

St Paul's Cathedral (St Paul's Churchyard, London, EC4M 8AD)

Opening hours: Monday - Saturday: 8:30am - 4pm • **Admission:** 14.50 £



THINGS YOU NEED TO KNOW

- The current Cathedral was designed by the famous court architect Sir Christopher Wren and built between 1675 and 1710 after its predecessor was destroyed in the Great Fire of London
- It is a protestant cathedral that has many similarities with St Peter's in Rome, notably in its enormous ornate dome
- It has the largest swinging bell in Europe, Great Paul, which strikes every day at 1pm
- The hour bell, Great Tom, strikes the hour and marks the death of royalty and senior churchmen
- Important services have included the 80th and 100th birthdays of Queen Elizabeth, the Queen Mother; the wedding of Charles, Prince of Wales, to Lady Diana Spencer
- This church is the symbol of the hope, resilience and strength of the city and the nation it serves

THINGS TO DO THERE

- Take the iPod Touch audioguide included in the entrance fee
- Enjoy the awe-inspiring interior of the cathedral
- Make your way underground and explore the crypt
- Climb up to the Whispering Gallery and try out the acoustic quirks of the
- Continue to the Golden Gallery and enjoy breathtaking views of London

TIPS & INSIGHTS

- Please note that it is not allowed to take photos inside
- On Sundays the cathedral is open only for worship (free entrance)

[MORE Info and Photos >](#)

10:30-13:30

Tower of London (Tower of London, London, EC3N 4AB)

Opening hours: Tuesday - Saturday: 9am - 5.30pm, Sunday - Monday: 10am - 5.30pm • **Admission:** 19.8 £



THINGS YOU NEED TO KNOW

- Tower of London is a historic castle in Central London
- It was founded by William the Conqueror in 1066 as part of the Norman Conquest of England
- The castle got its name after its first tower; the White Towers built in 1078 a resented symbol of Norman oppression
- It served as a royal residence, prison and fortress until the Tudors
- The general layout of the fortress was established by the late 13th century
- The Tower played a prominent role in England's history with power struggles, executions, and cruelty
- Controlling the Tower of London was important for ruling the country
- The Crown Jewels are kept in the Tower
- It is believed that if the ravens leave the castle; the kingdom will fall

THINGS TO DO THERE

- As soon as you enter, check the starting time of the next Yeoman Warder guided tour (60 min) that tells exciting tales from the Tower's past (every 30 min, included in the entrance fee)
- If you have to wait for the tour see the Crown Jewels, one of the unmissable highlights of a visit to the Tower of London
- Explore the Tower by visiting the other highlights: the traitor's gate, the Bloody tower, the Wakefield tower and the White Tower (housing the Royal Armouries)

TIPS & INSIGHTS

- Don't be put off if the queue is miles long. It moves rather quickly
- Audioguide is not included in the entrance fee (extra £4.00)

[MORE Info and Photos >](#)

Attraction Details

13:30-13:45



Tower Bridge

 (Tower Bridge London SE1 2UP)

Opening hours: April - September: 10am - 6.30pm, October - March : 9:30am - 6pm • Admission: 8 £

THINGS YOU NEED TO KNOW

- Tower Bridge is a bascule bridge next to Towers of London. It was opened in 1894
- The bridge can be raised for ships to pass under it
- The massive mechanics (steam engine and hydraulics) that moved the bridge was an unbelievable technical breakthrough of its time
- It takes only 86 sec to raise the bridge
- It was built in a neo-Gothic style and designed to harmonize with Towers of London

THINGS TO DO THERE

- Take photos of this symbol of London
- Enjoy the bridge being raised (if you are lucky)

TIPS & INSIGHTS

- As part of the Tower Bridge Exhibition, visitors can climb up to the top of the bridge for a bird's-eye view of the Tower of London and the Thames (43m)
- After dawn the bridge is beautifully illuminated

[MORE Info and Photos >](#)

15:30-16:45



Regent's Park

 (Regent's Park, London, NW1 4NR)

Opening hours: All year round: [Check website](#)

THINGS YOU NEED TO KNOW

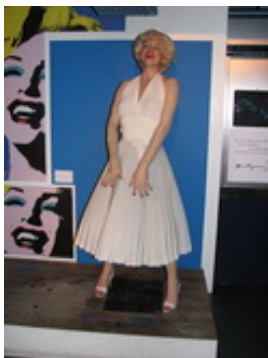
- The Regent's Park is a large and beautiful royal park in Central London
- It used to be one of Henry VIII's favorite hunting grounds
- The park is home to the London Zoo
- A wide variety of activities is available to visitors such as boat rowing, open air theater, bars and cafés, sports facilities

- Walk along Regents canal
- Find an empty bench and relax
- Visit Queen Mary's Rose Garden

TIPS & INSIGHTS

[MORE Info and Photos >](#)

17:00-19:00



Madame Tussaud's

 (Marylebone Road, London, NW1 5LR)

Opening hours: Throughout the year: [Check website](#) • Admission: 28.8 £

THINGS YOU NEED TO KNOW

- Madame Tussaud's is a museum of waxwork models of the famous (the Queen, Arnold Schwarzenegger, Pele, etc)
- It was founded by wax sculptor Marie Tussaud in 1884
- It organizes itself into various galleries such as World Leaders (Clinton, Tony Blair), the Royal Family (the Queen), History of London or the Music Zone (Beatles, Bob Marley)
- Chamber of Horror has the very guillotine that beheaded Queen Marie Antoinette in the French Revolution

- Enjoy the fantastic Spirit of London show and do not miss the Marvel Super Heroes 4D show

TIPS & INSIGHTS

- Expect a very long queue especially in high tourist seasons
- You can save time and money by [booking your ticket online](#). It comes with priority access
- You can also

[MORE Info and Photos >](#)

THINGS TO DO THERE

- Have fun walking around and meeting celebrities, sporting legends, music megastars, world leaders and take a photo with all your favorites



Do you like this guide?

Share your testimonial on

PROMPT GUIDES Facebook page.

[Click here>](#)

Photo credits

Cover page

Cover photo #1: Photo by [Kol Tregaskes](#)

Cover photo #2: Photo by [Andreas-photography](#)

Cover photo #3: Photo by [sweenpole2001](#)

Map

<http://www.bing.com/maps>

Attraction details

Big Ben: Photo by [vituh](#) • Houses of Parliament: Photo by [brownpau](#) • Westminster

Bridge: Photo by [markhillary](#) • Nr.10 Downing Street: Photo by [robertsharp](#) • Westminster

Abbey: Photo by [mecb](#) • Buckingham Palace: Photo by [Walakazoo](#) • St. James's Park:

Photo by [Nenyaki](#) • Cabinet War Rooms: Photo by [cronncc](#) • The British Museum:

Photo by [Christopher Chan](#) • Harrods: Photo by [loop_oh](#) • Trafalgar Square: Photo by [wallyg](#)

• National Gallery: Photo by [robinh00d](#) • Piccadilly Circus: Photo by [clry2](#) • Oxford

Street and Oxford Circus: Photo by [salimfadhley](#) • Marble Arch: Photo by [jazzyfox](#) •

Hyde Park and Kensington Gardens: Photo by [frankdasilva](#) • Imperial War Museum: Photo

by [Tiger 2000](#) • London Eye: Photo by [sweenpole2001](#) • St Paul's Cathedral: Photo by [Robert](#)

[Scarth](#) • Tower of London: Photo by [Márcio Cabral de Moura](#) • Tower Bridge: Photo by [wallyg](#)

• Regent's Park: Photo by [Rain Rabbit](#) • Madame Tussaud's: Photo by [bortescristian](#)



Like PromptGuides
on **Facebook** [Click here>](#)

facebook.com/promptguides

PROMPT GUIDES

PromptGuides.com (web)

twitter.com/PromptGuides (twitter)

PromptGuides.com/blog (blog)

facebook.PromptGuides.com (facebook)

flickr.com/photos/PromptGuides (flickr)