

PROMPT GUIDES



London Hotel Guide

This short guide is intended to make your life easier and help you select the hotel that is right for you.

Table of Contents

Preface..... **3**

London Neighborhood Guide **4**

Airports - London Transfers **8**

 Heathrow - London Transfer 9

 Gatwick - London Transfer..... 10

 Luton - London Transfer..... 11

 Stansted - London Transfer 12

Hotels by Category **13**

 Hotels in Safe Areas 14

 Hotels for Elderly People 15

 Hotels for Families with Kids..... 16

 Hotels for Group of Friends..... 17

 Hotels for People with Disabilities..... 18

 Hotels for Young Couples 19

Photo Sources **21**

Preface

Before we travel we have to take care of so many things. We need to work twice as hard at our workplace to get everything done before we leave. We need to prepare the house, buy the things we need on our journey.

On top of this we have to organize our trip too: book our airplane tickets, find our hotel, plan our itinerary, read travel reviews... etc.

One of the hardest things is to find the right hotel. We are going to an unknown city. Most of the time we have very limited information about its neighborhoods. All hotels say that they are the best, set in a lovely area with the most friendly staff you've ever met. We need to spend hours, if not days, to find alternatives, review their offerings, make our short list and finally make our decision.

We, at PromptGuides.com, want to help you. We want to make your travel preparation as easy as possible. Our local hotel experts have put together this London Hotel Guide to significantly reduce the effort of finding your hotel.

We created a number of categories based on different traveling needs:

- Elderly travelers
- Families with kids
- Group of friends
- Travelers with disabilities
- Young Couples.

After that, our experts looked through London's hotel offers and we selected the ones that will satisfy the needs of each category.

With the help of this guide, you won't have to go through hundreds of hotels any more. Simply look up the category that suits you and book one of the hotels that we recommend.

The guide contains links to [HotelsCombined.com](https://www.hotelscombined.com), the world leader in hotel price comparison. Simply click the links and you will be taken to the hotel page that you are interested in. Once there you can easily select the best rate available and reserve your room and move on to the next task to take care of.

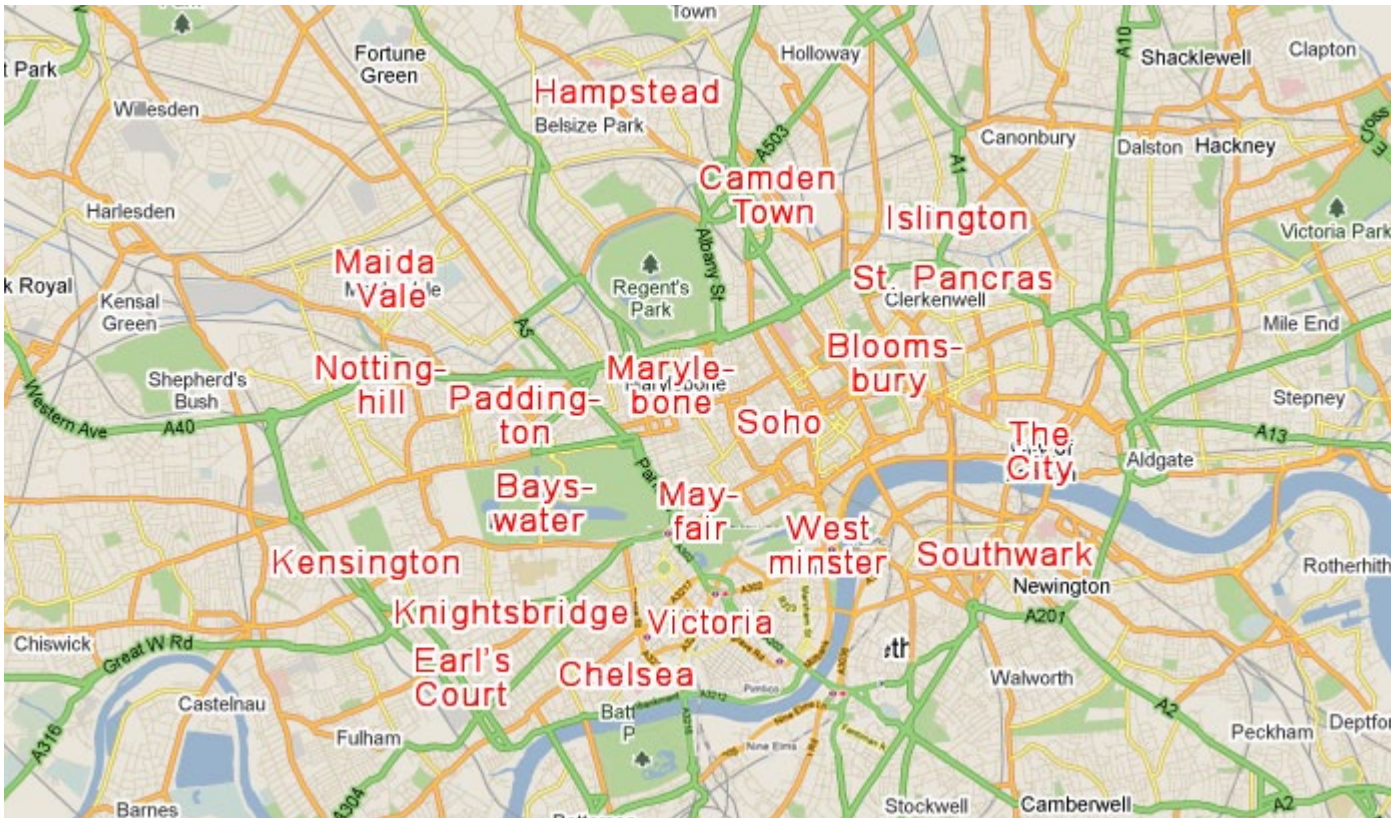
If you are still unsure which hotel to book, ask for a [London Hotel Expert advice](#).

We wish you safe and pleasant holidays.

The PromptGuides Team
[PromptGuides.com](https://www.promptguides.com)



London Neighborhood Guide



IN GENERAL: London has a good public transportation system. 11 tube lines service the city. Getting around is fast and easy. We recommend tourists to book a hotel in Zone 1 or Zone 2 during their visits. These two zones encompass the majority of tourist attractions travelers regularly want to see. Staying in these zones will save you on public transportation costs and travel time.

Zone 1 and 2 have hotel options for all budgets.

The following section describes the areas that you should consider when looking for a hotel.

HAMPSTEAD: Hampstead is an affluent and very attractive London neighborhood. Set on a hill, it is characterized by parklands and is one of the most expensive housing areas in the world. More billionaires live here than in any other area in the UK.

[Find hotels in this area >](#)

CAMDEN TOWN: Camden Town is one of London's most bohemian-urban areas. It is best known for its colorful and lively markets. By night Camden buzzes with live music venues, clubs, pubs, bars and restaurants.

[Find hotels in this area >](#)

ISLINGTON: Islington is a fashionable neighborhood where many rich media and political personnel live. Tony Blair also lives here. The

neighborhood features large Georgian and Victorian houses. The area around Islington Green is characterized by boutiques, antique shops and bars. Upper Street is one long stretch of restaurants and bars.

MAIDA VALE AND ST. JOHN'S WOOD: Both are elegant neighborhoods that feel like leafy suburbs with beautiful residences, shops, and green space. Their roads are lined with smart mansions and expensive villas. The area is a good choice for those who look for a quiet and orderly environment. Paddington is just a stone throw away making speedy access to Heathrow extra easy.

LONDON NEIGHBORHOOD GUIDE

ST. PANCRAS: The St Pancras area is a busy transport hub. Three important railway stations are located here: St Pancras train station, Euston and King's Cross stations. Eurostar services to Paris and Brussels leave from here. Ideal location if you arrive by train or plane to do day trips to continental Europe or the rest of the UK.

NOTTING HILL: The area became world famous thanks to the eponymous film with Hugh Grant and Julia Roberts. Notting Hill is an affluent cosmopolitan neighborhood with sizable Victorian houses, high-class shopping and chic dining options. Its weekend markets and antiques shops make Portobello Road a great spot to visit and take a stroll.

BAYSWATER AND PADDINGTON: These lively multicultural residential and business neighborhoods offer a good choice of affordable accommodation and restaurants. Shopping opportunities are also plentiful along Queensway and Oxford Street. Paddington train station gives easy and speedy access to Heathrow. If you plan to make daytrips to Oxford, Windsor, Bath or Bristol proximity to Paddington is an advantage. Bayswater makes a smart choice for visitors looking for a quiet neighborhood with easy access to London's main attractions.

[Find hotels in this area >](#)

MARYLEBONE: Marylebone is an affluent, inner-city area of central London. It is mostly residential with many medical and dental offices. Some of its best known features are Madame Tussaud's, the splendid Georgian Regent's Park and the London Zoo. Along Edgware Road visitors can enjoy a meal in number of ethnic restaurants representing, among others, Turkish, Lebanese, and Iranian cuisine.

[Find hotels in this area >](#)

SOHO: Soho is a vibrant and trendy area with full of energy. It is definitely the place to be if you want to be close to the buzz. Soho leads a contradicting double life being both a Red

Light district, and a respectable drinking and dining area. Visitors can enjoy a wide variety of cuisine here. Next to top restaurants it features interesting pubs, theatres and a rich nightlife. If you want to go out in the evening, perhaps go to party, book your hotel in Soho or nearby. Tourists who prefer quiet and calm environments should however look for a different neighborhood for their hotels.

[Find hotels in this area >](#)

BLOOMSBURY: This leafy neighborhood is an ideal pick for those who look for a charming environment. It is well suited for sightseeing. A few important landmarks are in the area (British Museum, University of London) and the rest of the central city is easily accessible. Finding a restaurant for dinner after a tiring day is not a hard task. Charlotte Street offers good alternatives. Shopping enthusiasts may also like Bloomsbury for its proximity to Oxford Street.

THE CITY: The City is London's business district. As such it is ideal for business travelers. The area should not be neglected by holiday travelers either, as it includes dozens of ancient churches and monuments, the Museum of London, and the Tower of London. The City is very busy during the day and offers top quality lunchtime dining.

MAYFAIR: Mayfair is an affluent neighborhood characterized with large, impressive 18th century houses. Many of its residents are fabulously wealthy foreigners with Arab, American and East Asian origin. Mayfair holds some of London's first class hotels, as well as Bond Street the most expensive shops. If you are looking for a luxurious hotel, Mayfair is one of the areas to consider. Although tucked-away pubs, restaurants, and shops offer a more affordable side to the neighborhood, budget travelers are better off focusing on another area.

[Find hotels in this area >](#)

WESTMINSTER: Westminster gives home to some of London's best know institutions: the Houses of Parliament, the Big Ben, Westmin-

ster Abbey, and Tate Britain. The area is busy during the day and quiet by night. It is a good choice for those who want to stay home and relax in the evenings.

[Find hotels in this area >](#)

SOUTHWARK – WATERLOO: This area is located on the South bank of the Thames. Southwark is packed with must-see tourist sites that draw so many tourists to London. These include the Tower Bridge, Shakespeare's Globe, the Tate Modern and the London Eye. The Borough Market is a must-visit for gourmet travelers. Easy access to the center of the city makes it an ideal hotel location for holiday travelers.

[Find hotels in this area >](#)

KENSINGTON: Upscale Kensington is a residential neighborhood renowned for its palace and gardens, and the excellent Natural History Museum and the Science Museum. If you fancy chic boutiques and expensive restaurants, Kensington is the place for you.

[Find hotels in this area >](#)

CHELSEA AND KNIGHTSBRIDGE: A bit farther away from the main action, both Chelsea and Knightsbridge are upscale areas with expensive houses. Great restaurants, specialty shops, and boutiques line trendy King's Road. If possible, Knightsbridge is even more elevated in shopping status with its iconic Harrod's.

[Find hotels in this area >](#)

VICTORIA: This is a commercial and residential area. It consists predominantly of commercial property, private and social housing, with retail uses along the main streets. The area is dominated by Victoria train and coach station. Although it is not the best choice for hotels from an aesthetical point of view, its proximity to major tourist attractions, such as Buckingham Palace, Westminster Abbey, St. James's Park, makes it convenient for sightseeing. If a charming environment is important to you, it is recommended that you choose a different area for your hotel.

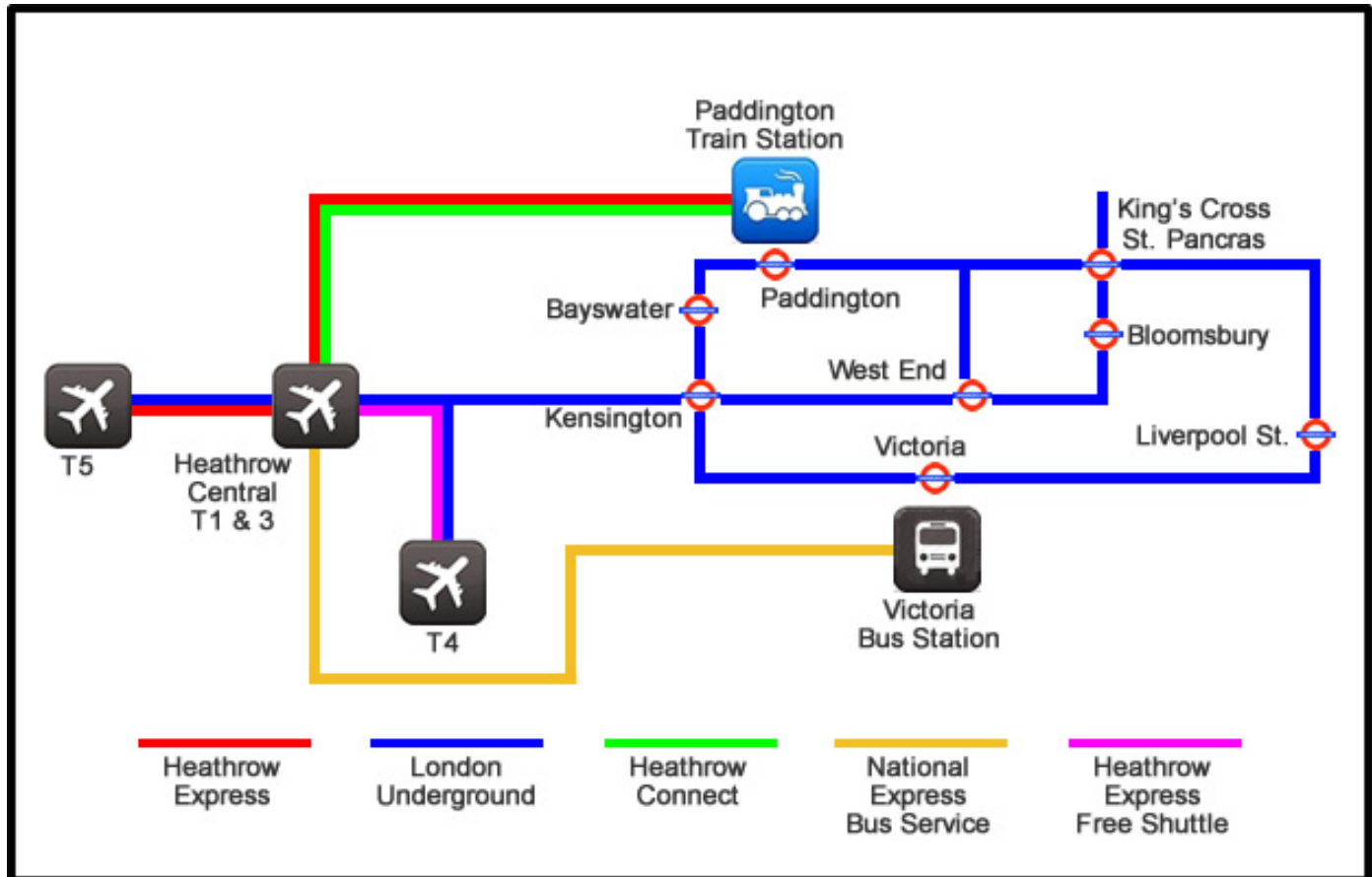
[Find hotels in this area >](#)

EARL'S COURT: The area around Earl's Court exhibition center provides a good selection of budget and mid-range hotels. Good underground links to central London are also a plus. Budget and price conscious travelers should consider the area when looking for a hotel.



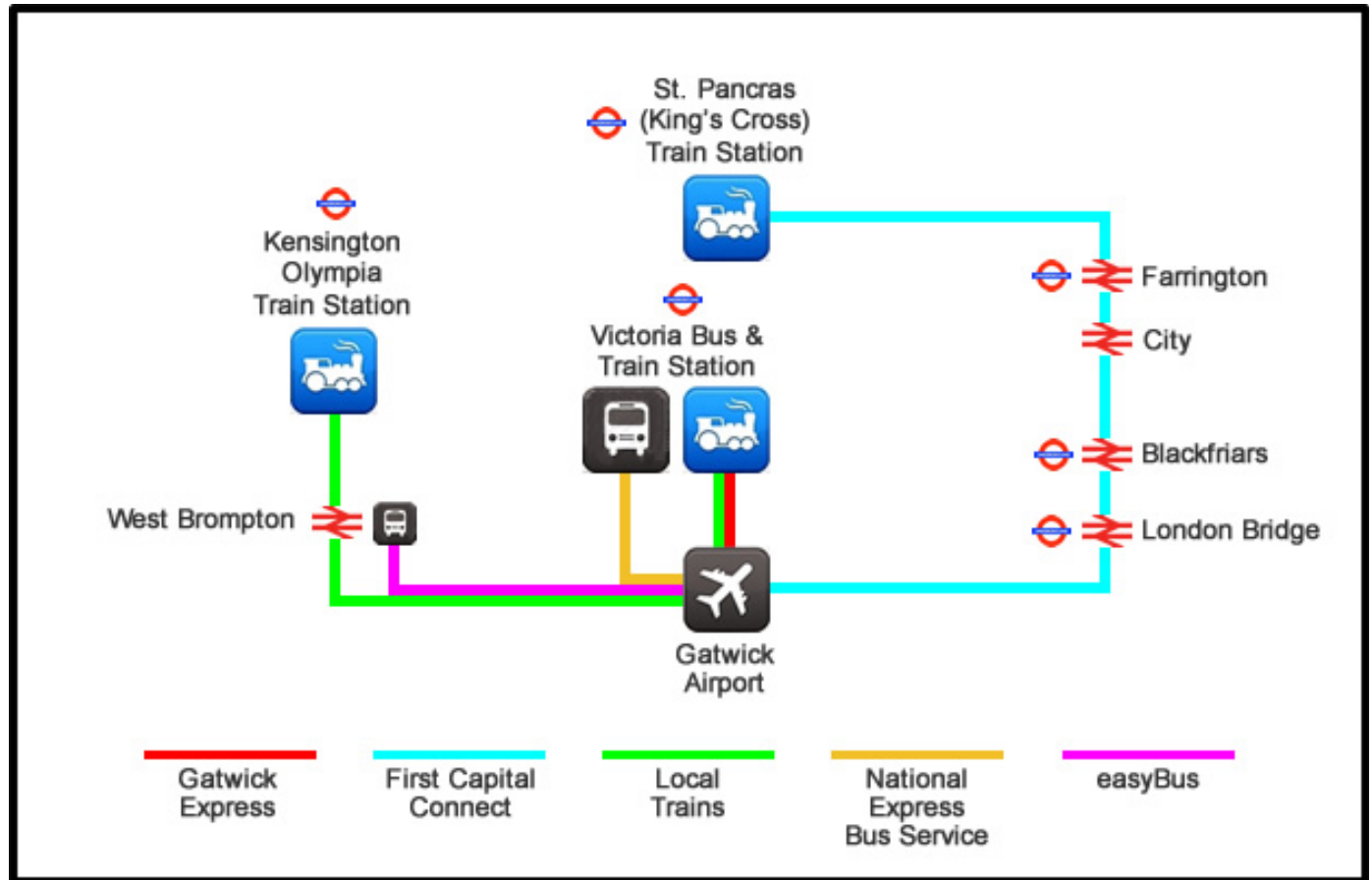
Airports - London Transfers

Heathrow - London Transfer



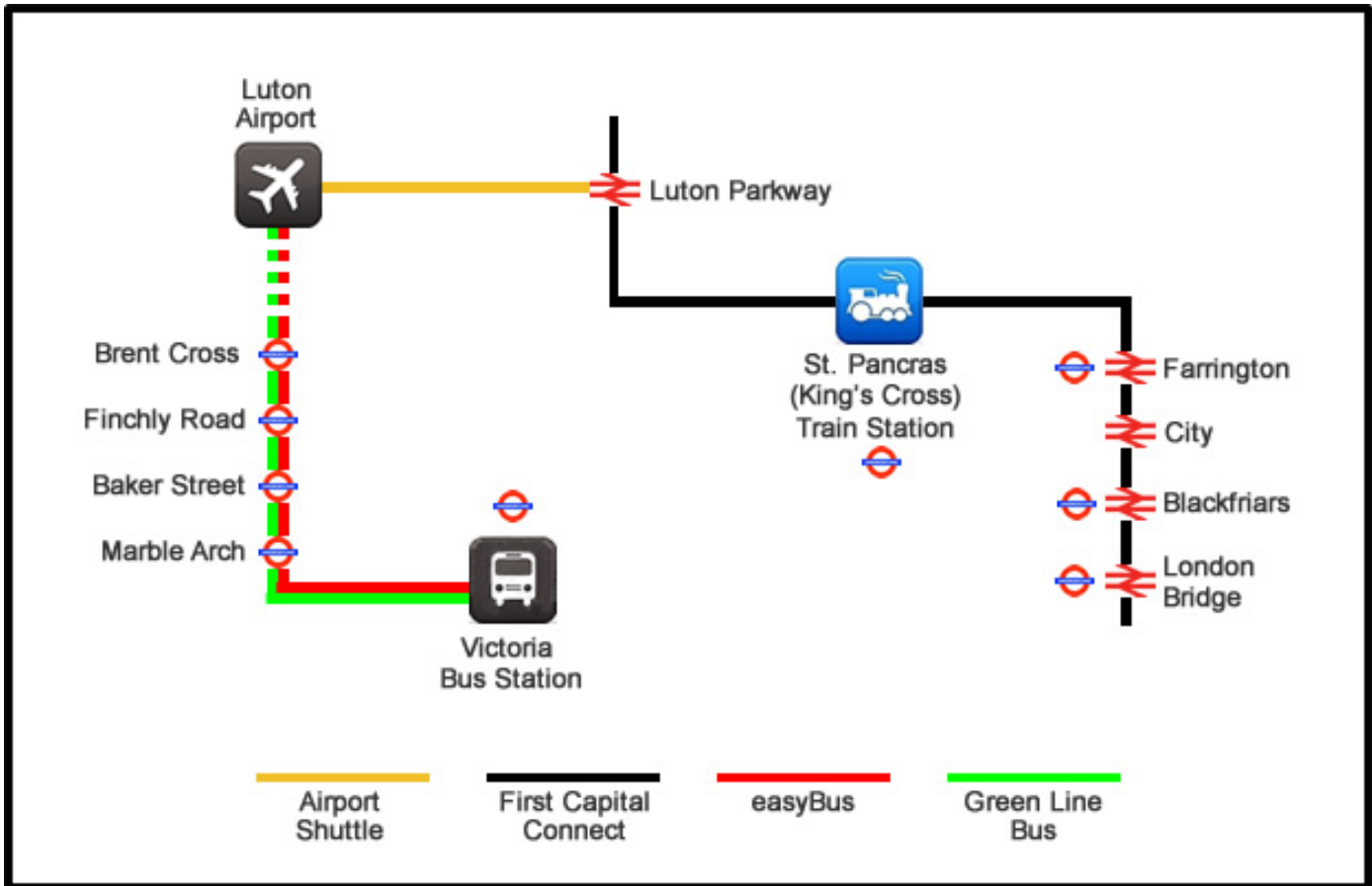
Options		Estimated Cost	Comments
Heathrow Express Train		£18.00	Every 15 minutes, 15-20 minute travel time
Heathrow Connect Train		£8.50	Every 30 (60 on weekends) minutes, 25-30 minute travel time
National Express Bus		£5.00	Highly variable times, 45-50 minute travel time
London Underground		£5.00	Every 5 minutes, 40-60 minute travel time
Black London Cab		£45-£70	30-60 minute travel time
Private Car		£60-£75	30-60 minute travel time
Private Bus (8-16 seats)		£105-£160	30-60 minute travel time

Gatwick - London Transfer



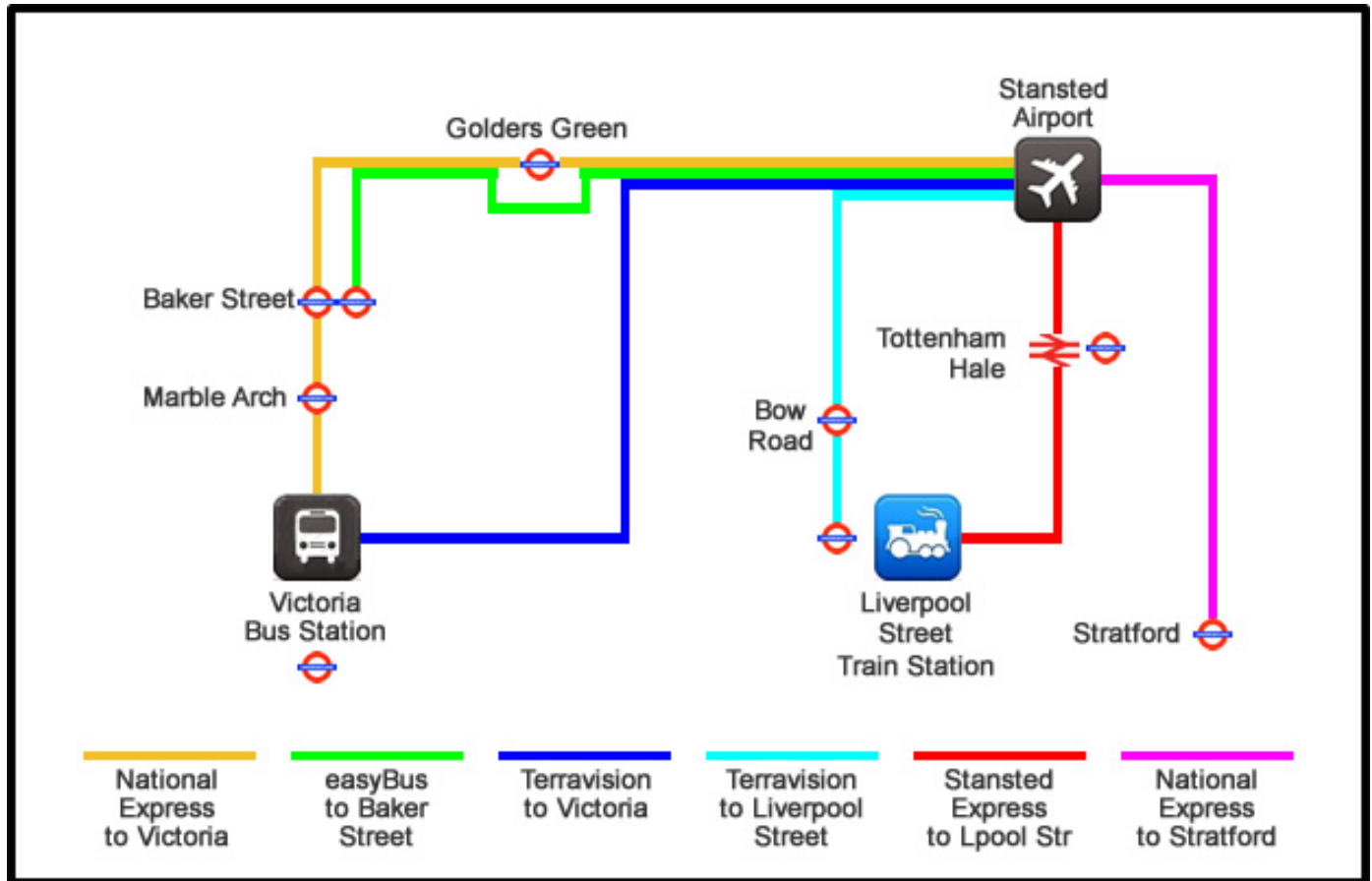
Options	Estimated Cost	Comments
Gatwick Express	£17.90	Every 15 minutes, 30 minute travel time
First Capital Trains	£9.40	3-4 times an hour 35-55 minutes travel time
Local Trains	£5.00 to £11.80	Stopping trains to London Victoria 40-50 minutes travel time
National Express Coach	£7.50	Roughly hourly, 90 minute journey
easyBus	£2+ (on-line)	2-3 times an hour 60-80 minute travel time £10 on day

Luton - London Transfer



Options	Estimated Cost	Comments
First Capital Train	£14.00	Up to 6 trains per hour, 45 minutes travel time
Green Line Bus	£15 or £16	Note: Shared Bus Service - easyBus and Green Line are the same service. easyBus tickets in advance. Every 20-30 minutes, 24x7 80 mins travel time to Victoria
easybus	£2+	
Private Car	£81	
8/12/16 Seat Bus	£170 / £205 / £235	

Stansted - London Transfer



Options	Estimated Cost	Comments
National Express bus to Victoria	£10,00	Every 20 minutes, 100 minute travel time
easyBus	£2+	Every 30 minutes, 75 minute travel time
Terravision Bus to Victoria	£9,00	Every 30 minutes, 75 minute travel time
Terravision Bus to Liverpool Street	£9,00	Every 30 minutes, 55 minute travel time
Stansted Express	£21,00	Every 15 minutes, 45 minute travel time
National Express Bus to Stratford	£8,00	Every 30 minutes, 50 minute travel time



Hotels by Category

HOTELS BY CATEGORY

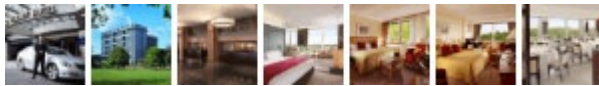
Hotels in Safe Areas

NOTE: Violent crime in London is rather rare. Petty crime such as pick pocketing is the only type of crime tourists should be cautious about. You should feel safe in London. The hotels on this page, however, are located in areas that are very safe.

5 star hotels

1. Royal Garden Hotel

[Learn more about this hotel >](#)



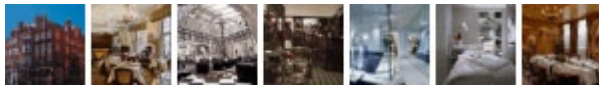
2. The Kensington Hotel

[Learn more about this hotel >](#)



3. Milestone Hotel Kensington

[Learn more about this hotel >](#)



4 star hotels

1. Ashburn Hotel

[Learn more about this hotel >](#)



2. The Parkcity

[Learn more about this hotel >](#)



3. Fraser Place Queens Gate

[Learn more about this hotel >](#)



3 star hotels

1. Premier Inn London Kensington Olympia

[Learn more about this hotel >](#)



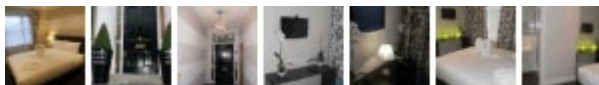
2. Grosvenor Kensington Hotel

[Learn more about this hotel >](#)



3. Russell Court Hotel

[Learn more about this hotel >](#)



Budget hotels

1. MEININGER Hotel London Hyde Park

[Learn more about this hotel >](#)



Hotels for Elderly People

5 star hotels

1. The Langham London

[Learn more about this hotel >](#)



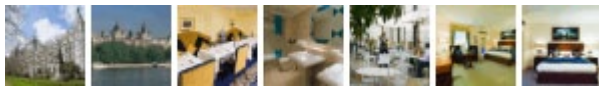
2. Claridge's

[Learn more about this hotel >](#)



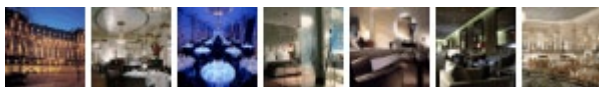
3. The Royal Horseguards

[Learn more about this hotel >](#)



4. The Waldorf Hilton

[Learn more about this hotel >](#)



4 star hotels

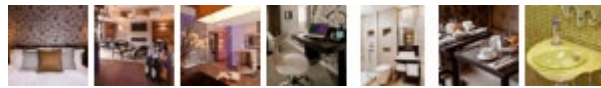
1. Apex London Wall Hotel

[Learn more about this hotel >](#)



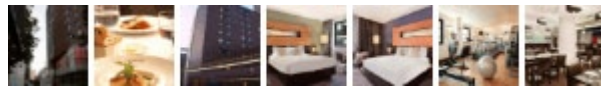
2. The Hide London

[Learn more about this hotel >](#)



3. Hilton London Tower Bridge

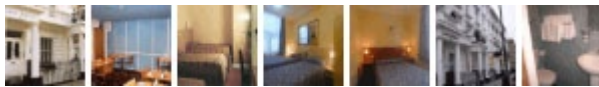
[Learn more about this hotel >](#)



3 star hotels

1. Luna And Simone Hotel

[Learn more about this hotel >](#)



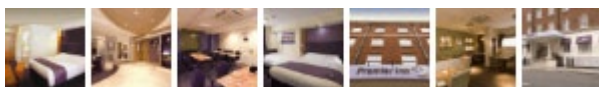
2. The New Inn

[Learn more about this hotel >](#)



3. Premier Inn London Victoria

[Learn more about this hotel >](#)



Budget hotels

1. Rhodes Hotel

[Learn more about this hotel >](#)



HOTELS BY CATEGORY

Hotels for Families with Kids

5 star hotels

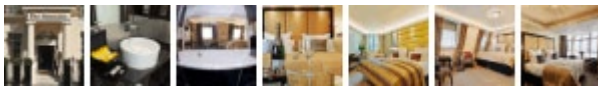
1. Royal Garden Hotel

[Learn more about this hotel >](#)



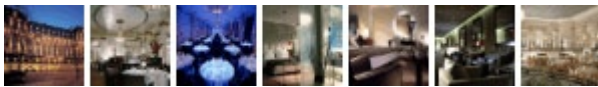
2. The Montcalm

[Learn more about this hotel >](#)



3. The Waldorf Hilton

[Learn more about this hotel >](#)



4 star hotels

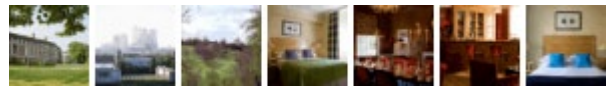
1. Park Plaza County Hall

[Learn more about this hotel >](#)



2. De Vere Venue Devonport House

[Learn more about this hotel >](#)



3. The Rembrandt

[Learn more about this hotel >](#)



3 star hotels

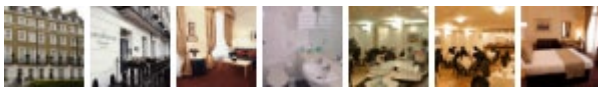
1. Premier Inn London Kensington (Earl's Court)

[Learn more about this hotel >](#)



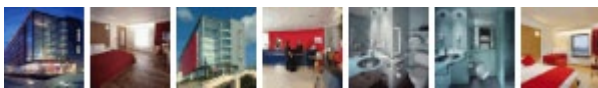
2. The Darlington Hyde Park

[Learn more about this hotel >](#)



3. Ramada Encore London West

[Learn more about this hotel >](#)



Budget hotels

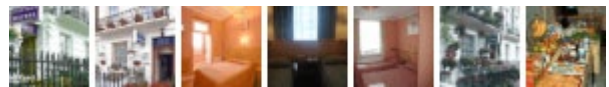
1. Mowbray Court Hotel

[Learn more about this hotel >](#)



2. Surtees Hotel

[Learn more about this hotel >](#)



Hotels for Group of Friends

5 star hotels

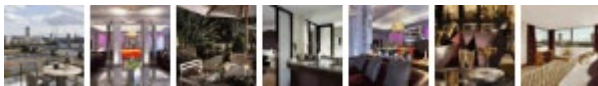
1. Royal Garden Hotel

[Learn more about this hotel >](#)



2. Swissotel The Howard London

[Learn more about this hotel >](#)



3. The Royal Horseguards

[Learn more about this hotel >](#)



4. The Montcalm

[Learn more about this hotel >](#)



4 star hotels

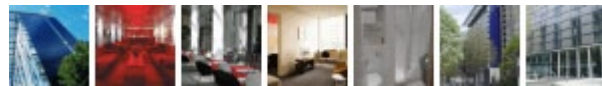
1. Hotel Indigo London-Paddington

[Learn more about this hotel >](#)



2. Mint Hotel Westminster

[Learn more about this hotel >](#)



3. Novotel London Tower Bridge

[Learn more about this hotel >](#)



3 star hotels

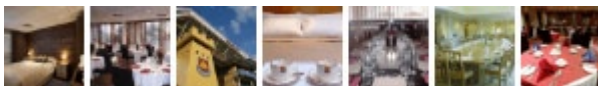
1. Premier Inn London City (Tower Hill)

[Learn more about this hotel >](#)



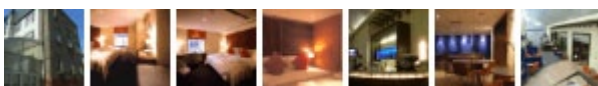
2. West Ham United Hotel

[Learn more about this hotel >](#)



3. MIC Hotel

[Learn more about this hotel >](#)



Budget hotels

1. Crestfield Hotel

[Learn more about this hotel >](#)



2. Avon Hotel

[Learn more about this hotel >](#)



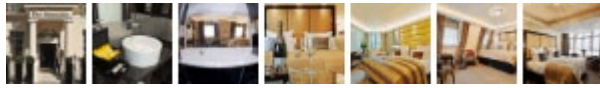
HOTELS BY CATEGORY

Hotels for People with Disabilities

5 star hotels

1. The Montcalm

[Learn more about this hotel >](#)



2. The Royal Horseguards

[Learn more about this hotel >](#)



3. Radisson Edwardian Hampshire

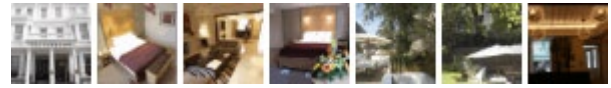
[Learn more about this hotel >](#)



4 star hotels

1. The Parkcity

[Learn more about this hotel >](#)



2. Ashburn Hotel

[Learn more about this hotel >](#)



3. The Rembrandt

[Learn more about this hotel >](#)



3 star hotels

1. Euston Square Hotel

[Learn more about this hotel >](#)



2. St Giles Hotel & Leisure Club

[Learn more about this hotel >](#)



3. Jurys Inn Islington

[Learn more about this hotel >](#)



Budget hotels

1. Ibis London City

[Learn more about this hotel >](#)



2. Ibis London Euston

[Learn more about this hotel >](#)



Hotels for Young Couples

5 star hotels

1. The Royal Horseguards

[Learn more about this hotel >](#)



2. The Langham London

[Learn more about this hotel >](#)



3. Templeton Place

[Learn more about this hotel >](#)



4. Andaz Liverpool Street London

[Learn more about this hotel >](#)



4 star hotels

1. Hilton London Tower Bridge

[Learn more about this hotel >](#)



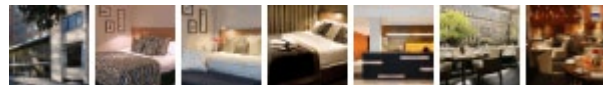
2. Hotel Indigo London Tower Hill

[Learn more about this hotel >](#)



3. Apex City Of London Hotel

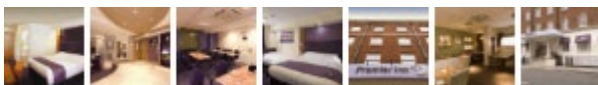
[Learn more about this hotel >](#)



3 star hotels

1. Premier Inn London Victoria

[Learn more about this hotel >](#)



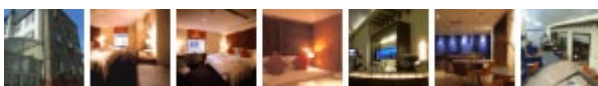
2. Premier Inn London City (Tower Hill)

[Learn more about this hotel >](#)



3. MIC Hotel

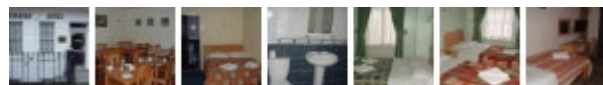
[Learn more about this hotel >](#)



Budget hotels

1. Winrose Hotel

[Learn more about this hotel >](#)



2. Avonmore Hotel

[Learn more about this hotel >](#)



3. Rhodes Hotel

[Learn more about this hotel >](#)





Are
You Still

CONFUSED?

Ask a London
Hotel Expert for a
recommendation

[Click here >](#)

Photo sources

Cover page

smittenkittenorig, <http://www.flickr.com/photos/smittenkittenoriginals/> (hotel room with bed)
no3rdw, <http://www.flickr.com/photos/no3rdw/> (hotel room with armchair)

Other Photos

London Neighborhood Guide (Page 4): Photo by: [ldhren >](#)

Airports - London Transfers (Page 8): Photo by: [stève >](#)

Hotels by Category (Page 13): Photo by: [Hotel Montecatini Terme >](#)

Small hotel photos: (Page 14-19): [Booking.com >](#)

PROMPT GUIDES

PromptGuides.com (web)

twitter.com/PromptGuides (twitter)

PromptGuides.com/Blog (blog)

facebook.PromptGuides.com (facebook)

flickr.com/photos/PromptGuides (flickr)